

November 2016

Dear Friend of Wild Care,

You may have heard by now that the Cape Wildlife Center of Barnstable is closing its doors as of March 1<sup>st</sup>, 2017, leaving Wild Care as the *only* wildlife rehabilitation hospital on Cape Cod. While the closure of the Cape Wildlife Center is a tremendous loss to both wildlife and the community, wildlife will continue to become entangled, sick and injured on Cape Cod, and we will be here to help.

**We need your help now, more than ever.**

Wild Care's team of experienced staff and volunteers are prepared to do whatever it takes to take in the additional songbirds, seabirds, turtles, and small mammals that are brought to our door due to Cape Wildlife Center's closure.

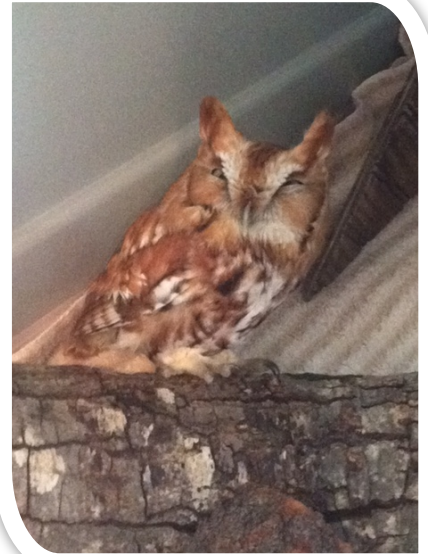
***But we simply cannot do it without your support.***

Wild Care's rehab center is located on conservation land in the town of Eastham. We cannot expand the footprint at our current location to accommodate large animals such as foxes, coyotes, raccoons and skunks. However, there are many steps that we *can* take to advance Wild Care's facility to accommodate additional animals. Investing in our staff, improving and increasing our indoor caging and supplies, purchasing moveable animal enclosures, and expanding the internal structure of Wild Care's facilities is the only way we can increase our capacity to take on potentially *hundreds* of additional animals per year.

Wild Care does not receive state, federal, or municipal funding. We rely heavily on donations from the general public and private donors to keep our hospital running. Wild Care currently receives up to 1,200 animals per year from caring citizens like you. Due to an influx of animals this past summer, we have already provided care to over 1,300 animals this year. The closure of the Cape Wildlife Center will bring even more animals to our doorstep.



*Eastern Gray Squirrels*



*Eastern Screech Owl*

***Wild Care specializes in the care of birds, reptiles, and small mammals. We will not turn these animals away at the door.***

Please consider making a donation TODAY. Help us to assist animals in need Cape-wide, through rehabilitation, rescue, education and advocacy. Every individual animal plays an important role in preserving the health & wellbeing of our environment. From an Eastern Screech Owl hit by a car, to an orphaned Eastern Gray Squirrel that fell from its nest during tree trimming. At Wild Care, every individual matters...

## *There are many ways in which you can help!*

- Make a **one-time donation** to help us get through the upcoming Winter Season.
- Help us support our wildlife patients into the future! Become a monthly **Sustained Giver**. Even \$10 per month will help us to feed and medicate a sick, injured or orphaned animal. It's easy! Sign up at <http://www.wildcarecapecod.org/donate-today/>.
- Consider leaving Wild Care as a beneficiary of your estate through **Legacy Giving**. Contact Executive Director Stephanie Ellis, [sellis@wildcarecapecod.org](mailto:sellis@wildcarecapecod.org) for more details.
- Support us at an **upcoming event**! We're always looking for sponsors or donations.

If you are already a Sustaining Giver - we are grateful for your support!  
We deeply appreciate your willingness to support the work and mission of Wild Care.  
Thank you for caring for Cape Cod's wildlife.



*Stephanie Ellis*

Stephanie Ellis  
Executive Director

Go *wild* this winter at...

## *Wild Care's Annual Wild Winter Night*

**Date:** March 18, 2017 from 5:30 PM to 8:30 PM

**Location:** Elks Lodge, 10 McKoy Road, Eastham

Evening festivities include:

- Silent and live auctions by renowned Auctioneer John Terrio of Auction Knights
- Live entertainment
- Opportunity drawings
- Tickets include chowder, appetizers, and soft drinks. Additional food and drinks available for purchase
- And so much more!

*To purchase advanced tickets, call 774-353-6203 or email [events@wildcarecapecod.org](mailto:events@wildcarecapecod.org).*

*Advanced Tickets: \$30 | At the Door Tickets: \$35*



Event sponsored by Lower Cape Veterinary Services and George's Place Fish Market. Snowy Owl courtesy of Shawn P Carey.

10 Smith Lane, Eastham, MA 02642 | 508-240-2255 | [www.wildcarecapecod.org](http://www.wildcarecapecod.org)

Visit us on Facebook @ Wild Care Cape Cod